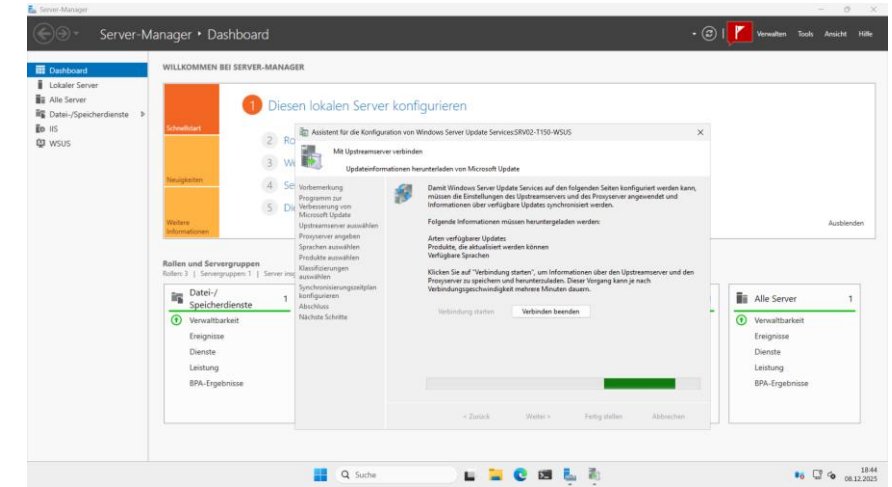


Dell PowerEdge T150 Windows Server 2025 WSUS Projekt 2



Testumgebung: Dell PowerEdge T150

Intel Xeon E-2334 - 4C/8T @ 3.4 - 4.8 GHz CPU
Interner Matrox G200eW-Grafikcontroller mit 16 MB Videoframebuffer
64 GB RAM @ 3200 MHz ECC – 4x 16 GB DDR4-3200 UDIMM ECC
Dell PERC H355 PCIe Gen4 RAID-Controller (RAID: 0,1,10)
iDRAC9 Basic mit Lifecycle Controller
1x 1 TB Western Digital - WD_Black AN1500 NVMe SSD PCIe 3.0 Add-In-Card
4x 400 GB SSD Toshiba PX04SVB040 Enterprise 2.5" SAS - RAID 0
2x 1GbE Broadcom RJ-45 Ports, 2x 10GbE Intel X550-T2 RJ45 Ports
Windows Server 2025 Essentials - Second Domain Controller/Srv2025 Projekt 2
Microsoft SQL Server 2019 Standard, SQL Server Management Studio (SSMS)
Rollen: Dateidienste, DNS, IIS, WSUS mit SQL Server Connectivity
Microsoft System-CLR-Typen, Microsoft Report Viewer
PowerShell-Scripts und SQL-Scripts zur WSUS-Serverbereinigung



Windows Server-Manager > Dashboard

	Read (MB/s)	Write (MB/s)
SEQ1M Q8T1	3504.69	3086.22
SEQ1M Q1T1	2478.27	2796.88
RND4K Q32T1	633.34	498.22
RND4K Q1T1	44.11	117.17

1x 1 TB Western Digital WD_Black (OS-Disk)



	Read (MB/s)	Write (MB/s)
SEQ1M Q8T1	7126.26	7054.09
SEQ1M Q1T1	4464.07	4532.03
RND4K Q32T1	575.13	749.36
RND4K Q1T1	133.24	134.99

4* 400 GB SSD Toshiba Enterprise SAS (Data-Disk)